

Results in Review

Newsletter for those serving people with special needs



Blende Dental Group attends the Special Care Dentistry Association (SCDA) Annual Conference

We recently attended the 24th annual Special Care Dentistry Association (SCDA) meeting which reviewed challenges to ensuring adequate access to dental care. Dr. Blende defines these challenges primarily as a lack of awareness on the part of both patients and their caregivers. Transportation issues, anxiety, and financial concerns are also barriers.

"We [the SCDA] continue to address hurdles to receiving adequate dental care, especially for special needs patients, but there is work to be done," says Dr. Blende. "Thirty percent of Americans don't have access to dental care for various reasons and that number rises to 50% for seniors and those with disabilities. The net health- and financial impact is enormous. Postponing care leads to emergency situations, unnecessary dental deterioration and results in increasing financial costs and health risks to patients. Most do not realize the connection between dental health and overall health and well-being, but when one regularly examines patients who postpone important work, the impact is quite apparent."

According to Dr. Blende, one of the most unfortunate barriers preventing patients from maintaining proper dental health is simply a lack of awareness that these programs and practices exist. We address this issue by spreading the word. Specifically, we partner with local and national organizations to raise awareness both within the health care community and among patients and their families. Today, over 60% of our referrals come from other dentists, physicians, care managers and social workers. These patients cannot be treated in a regular dental office setting due to their overarching medical, physical and ambulatory issues.

About the Blende Dental Group

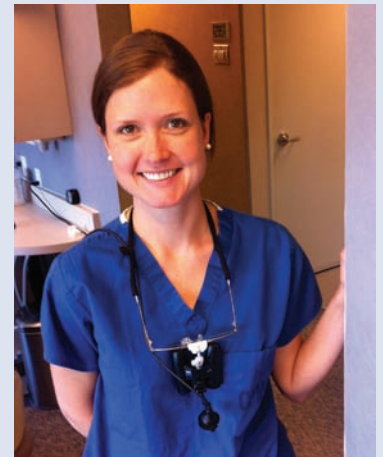
The Blende Dental Group is Home of the House Call Dentists. We serve general patients and focus on individuals with special needs, including seniors, phobics and those with disabilities (behavioral, cognitive, medical or physical challenges). We are a medical-dental group with over 40 years combined experience. We address a diverse range of patients by individualizing our treatment, either Awake (in-office), Asleep (under general anesthesia at one of eight Bay Area hospitals where we are on staff), or At Home (in the patient's home within a 60-mile radius of San Francisco). The Blende Dental Group has earned its reputation as a national leader in the treatment of patients with special needs by safely and successfully completing thousands of complex cases. Our vision is to remove barriers to receiving dental care. Our mission is changing lives one smile at a time: Awake, Asleep, or At Home.

The Blende Dental Group is pleased to announce the arrival of our Chief Dental Director Caitlin Batchelor D.D.S., Special Care Dentistry

Dr. Caitlin Batchelor, a native Virginian, received her undergraduate degree from the University of Virginia, and earned a Doctor of Dental Surgery (D.D.S) from Virginia Commonwealth University's Medical College. Dr. Batchelor discovered her passion for treating every individual, regardless of their unique challenges. She completed her two-year general practice dental residency at Wake Forest University Medical Center under the guidance of her director, Dr. Judith Messura, Past President of the Special Care Dentistry Association (SCDA). She treated hundreds of patients with a variety of physical, medical and cognitive disabilities. Her goal is to help patients achieve optimal oral health and a beautiful smile by providing outstanding dental care with a gentle, caring, individualized approach.

When we asked Dr. Batchelor about her personal reasons for choosing special care dentistry, a rare choice for many, she explained, "I am passionate about providing individually-tailored, excellent oral health care to everyone, especially those who otherwise would not have access to dental care. I believe each individual is different and deserves a plan for care that takes into consideration their unique qualities and health needs. Dental restorations can be beautiful as well as functional, and I approach each case with attention to detail in order to achieve the highest quality care." Dr. Batchelor adds that she cherishes the moment when her patients re-discover the beauty of their own smile after receiving care from an expert team.

Please join us in welcoming Dr. Batchelor to our practice.



Visit blendedentalgroup.com to see us in the news



**On call
24 hours day,
7 days a week**

blendedentalgroup.com

**1-877-HOUSE 07
(1-877-468-7307)**

Results in Review

Newsletter for those serving people with special needs

Featured Patient Story: Bruce Oka

Not only are the doctors and staff at the Blende Dental Group advocates for individuals with a wide variety of medical and dental needs, but they also care for those who dedicate their lives to individuals with disabilities. Below is the case study of Bruce Oka, whom most residents in San Francisco recognize because of his poster, alongside the mayor of our city, in every public parking garage. Mr. Oka is a Board member of the SFMTA, as well as an advocate for the special needs community. In those photos, he has missing teeth. Thanks to a complex and successful case performed at The Blende Dental Group, Bruce now has a beautiful smile.

He was referred to the Blende Dental Group by Dr. Paul Subar, Assistant Professor and the Director of the Special Care Clinic and Hospital Dentistry Program at the University of the Pacific (UOP), for specialized care for his dental health with appropriate management of his complex medical needs, including cerebral palsy and a previous neck injury and surgery resulting in delicate cervical tissues with functional limitations. Mr. Oka's primary concern upon meeting Dr. Blende was a long overdue check-up and broken teeth. Upon examination, Mr. Oka was found to have significant dental caries and multiple broken teeth due to clenching and grinding. Because of the complexity of the case, difficulty positioning the patient because of neck limitations, and the extent of dental care to be accomplished, it was determined Mr. Oka would be most comfortable while asleep, under general anesthesia in a hospital-setting, at Kaiser Permanente San Francisco Medical Center.

During a 4-hour procedure in the operating room at Kaiser, the team removed three severely decayed teeth. They eliminated cavities on remaining teeth, placed three composite restorations, and prepared multiple crowns and bridges. Mr. Oka was seen a few weeks later in the office for cementation of four porcelain-fused-to-metal bridges and nine crowns. The crown and bridgework was designed to open Mr. Oka's bite, restoring the significant collapse due to tooth wear.

Treatment Plan:

3 extractions, 3 composites, 9 single crowns, 3 PFM bridges

Vertical dimension of occlusion opened [Bite opened to restore a natural, even bite]

SAVE-THE-DATE: Alzheimer's and Oral Health (September 18, 2012)

The Blende Dental Group invites you to join us for an educational cocktail event, Tuesday, September 18, from 5:30-7:00 p.m. at 390 Laurel Street, Suite 310 (cross street Sacramento), Presidio Heights in San Francisco. Due to limited space, please RSVP: community@drblende.com or (415) 563-4261.

Dr. Blende, and our guest speaker, will be giving a 15-minute presentation on optimizing dental health among those with Alzheimer's and other senior health issues. Specifically, the challenge of detecting oral health issues and the significance of their impact on the final years of life. The discussion will include specific tools and techniques to address these issues.

We will be serving wines, tea coolers, hors d'oeuvres and desserts, all crafted by community members. We hope you can make it.

Autism and Oral Health

We recently hosted an Autism and Oral Health event for the community in our office on Laurel Street in San Francisco. The event included presentations by Dr. David Blende, Emmylou Santos, M.S., BCBA, a Behavioral Analyst of Ages Learning Solutions, in addition to Michelle Bernardo, a Registered Dentist in Alternative Practice (RDHAP) who partners with The Blende Dental Group for House Calls. These professionals shared their insights into optimizing the dental health of individuals with autism and other developmental disabilities. They covered both techniques and tools to improve daily oral hygiene, as well as a clinical perspectives on oral health issues that arise in this group.



07/2012/SN

We welcome your referrals. Please call (800) 575-3375